



Naval Facilities Engineering Systems Command,
Pacific
258 Makalapa Drive
Suite 100

MILITARY RELOCATION TO GUAM AND CNMI PROGRAMMATIC AGREEMENT (PA) MEMO #1

Project: P-280 Aviation Administration Building	Date: March 30, 2021 Comment Period Open Until: May 14, 2021
Project Location: Andersen Air Force Base (AAFB), Guam	Prepared By: NAVFAC Pacific

PROJECT SUMMARY:

This project is for proposed construction of an aviation administration building to provide command and administrative space that will support an assigned 1st Marine Aircraft Wing (1st MAW) aviation combat element, transient deployed aviation units and other Marine Air-Ground Task Force (MAGTF) elements assigned to Guam. The facility will be capable of supporting multiple functions to include Airfield Operations, a Marine Aircraft Group Headquarters (MAG HQ), a Marine Air Control Group Detachment (MACG Det), and an Arrival/Departure Airfield Control Group (A/DACG). Adequate and efficiently configured facilities are required to consolidate airfield operations and USMC passenger and deployments in a centralized location. Currently AAFB and Naval Support Activity (NSA) Marine Corps Base Camp Blaz (MCBCB) do not have a facility to support readiness of Guam-based MAGTF aviation and other USMC forces operations.

This project was identified after preparation of the Final Environmental Impact Study (FEIS) for the military relocation to Guam and the Commonwealth of the Northern Mariana Islands (CNMI) and Appendix E under various projects of the 2011 *Programmatic Agreement among the Department of Defense, the Advisory Council on Historic Preservation, the Guam State Historic Preservation Officer, and the Commonwealth of the Northern Mariana Islands State Historic Preservation Officer Regarding the Military Relocation to the Islands of Guam and Tinian* (2011 PA). In accordance with Stipulation I.E. of the PA, it is a new project associated with the Guam and CNMI Military Relocation (the Undertaking). This memorandum presents information to allow the public to provide comments on the identification and evaluation of historic properties and the finding of effect.

PROJECT LOCATION:

The project is located within AAFB in northern Guam. AAFB is a flat limestone plateau ranging in elevation from sea level to over 600 ft (182 m). There are no permanent streams for surface drainage from this portion of the island because all water percolates through the highly permeable limestone. A few seasonal streams may exist in times of heavy rainfall.

Some of the traditional Chamorro place names in this vicinity are Fafalog and Caiguat.

- 1 This PA Memo is required by Stipulation IV.E.2.a. of the PA as a means for interested members of the public to provide comments on the identification and evaluation of historic properties. Stipulation IV.E.1.b. of the PA requires the DoD to take into account comments received within 45 days of the date of the delivery of this PA memo to the SHPO and public notification via the CRI website.

The Area of Potential Effects (APE) for P-280 is 8 acres (3.23 hectares). The project APE is depicted in Figure 1.

PROJECT DESCRIPTION:

The aviation administration building will provide spaces for personnel, a passenger terminal waiting area, baggage and cargo handling area, security, processing, and sterile holding for deployed crews. In addition, the building will include support functions such as conferencing, secure areas, lockers, passenger elevator, and other required building support. The project also constructs an additional apparatus bay to the existing north ramp fire station, Building 2659, to house an additional fire truck.

Generally, construction efforts include: geospatial surveys, grading and temporary erosion and soil control; pavement for roads, parking, driveways, project site, and curbs and gutters; landscaping, fencing, concrete for sidewalks and ramps; electrical power, water (fire protection and potable), sewer, and storm water drainage systems; and possible munitions of explosive concern (MEC) removal. These tasks may require geotechnical borings of varying depths, mechanized excavation, placement of survey markers, and other ground disturbing activities.

Specifically, the project will require site preparation and improvements, paving improvements, electrical and mechanical work described below.

Site preparations include temporary erosion control for the project site, cut and fill, probing and grouting for foundations, and clearing and grubbing. Demolition includes utility Building 2619, Building 2616, and the existing wash rack to clear the site for this project.

Paving and site improvements include Portland cement concrete and asphalt pavement, patching of roadways, curb and gutter, sidewalks and ramps, landscaping, airfield fencing, site demolition, and a trash enclosure. Personal and government vehicles parking facilities will be provided.

Electrical utilities include the relocation of existing electrical, primary and secondary distribution systems, manholes, transformer, area lighting, a generator building, communications distribution for the project, and relocation of existing communication utilities.

Mechanical utilities include water distribution system, sanitary sewer lines, storm drainage lines, and wash rack and mechanical piping.

IDENTIFICATION OF HISTORIC PROPERTIES:

In planning for the Undertaking, the Department of Defense (DoD) first conducted a data gap analysis to determine the need for supplemental identification and evaluation surveys and then conducted those surveys. In consultation with the Guam SHPO, Advisory Council on Historic Preservation (ACHP), National Park Service (NPS) and Concurring Parties to the 2011 Programmatic Agreement (2011 PA), the DoD has applied the results of those identification efforts to the siting/lay down of individual projects to avoid and minimize effects to historic properties to the extent practical.

2 This PA Memo is required by Stipulation IV.E.2.a. of the PA as a means for interested members of the public to provide comments on the identification and evaluation of historic properties. Stipulation IV.E.1.b. of the PA requires the DoD to take into account comments received within 45 days of the date of the delivery of this PA memo to the SHPO and public notification via the CRI website.

DoD surveys and evaluations have focused on project-specific APEs, defined consistent with 36 CFR §800.16(d) to include those portions of the island of Guam subject to direct and indirect effects of projects included in the Undertaking. Both architectural and archaeological assessments have been completed.

More specifically, the APE for these vertical projects have been subject to one or more of the historic property identification efforts listed in 36 CFR §800.4(b)(1), which may include background research, consultation, oral history interviews, sample field investigation and field survey. As such, results of identification and evaluation efforts in the vicinity of, and including, the APEs for the projects can be found in the following original studies of cultural and/or historic resources (Figure 2):

Davis, R.

1983 *Andersen Air Force Base Central Reconnaissance Survey*. Government of Guam Department of Parks and Recreation. MS on file at Andersen AFB, 36CVS/CVN, Guam.

Dixon, B., T. Rudolph, A. Jalandoni, I. Nelson, M. Hroncich-Conner, S. Leary, R. Schaefer, E. Lash, M. Todd

2015 *Proposed Guam and CNMI Military Relocation 2012 Roadmap Adjustments SEIS Live-Fire Training Range Complex Footprints, Main Cantonment, Utilities, Communications, Well Field Alternatives and Access Route Options Volume I: Potential Direct Impact Area In-Fill Cultural Resources Study Narrative*. Prepared for Naval Facilities Engineering Command Pacific, Pearl Harbor, Hawaii. Cardno TEC, Inc., Honolulu, Hawaii. *Note: GIS data labeled as 2015a on Figure 2.*

Grant, M., M. Travisano, S. Wenzlau, and M. Durst

2007 *Results of Cultural Resources Inventories for Establishment and Operation of an Intelligence, Surveillance, Reconnaissance, and Strike Capability and the Development of Red Horse Squadron, Andersen Air Force Base, Guam*. GeoMarine, Inc., Plano, TX.

Mohlman, Geoffrey

2015 *Final Report, Historic Inventory Survey, Andersen Air Force Base, Territory of Guam*. Prepared for Department of the Navy, Naval Facilities Engineering Command Marianas. Prepared by Southeastern Archaeological Research, Inc.

Salo, E. and G. Mohlman

2012 *Historic American Engineering Record for Andersen Air Force Base, North Field*. February. Dixon, Boyd, S. Walker and R. Schaefer

Tuggle, H.

1993 *Small and Developed Parcel Survey Areas*. Pages 35-42 in *The Archaeology of Orote Peninsula: Phase I and II Archaeological Survey of Areas Proposed for Projects to Accommodate Relocation of Navy Activities from the Philippines to Guam, Mariana Islands*.

3 This PA Memo is required by Stipulation IV.E.2.a. of the PA as a means for interested members of the public to provide comments on the identification and evaluation of historic properties. Stipulation IV.E.1.b. of the PA requires the DoD to take into account comments received within 45 days of the date of the delivery of this PA memo to the SHPO and public notification via the CRI website.

Prepared for Belt Collins and Associates by International Archaeological Research Institute, Inc. Honolulu, HI.

Welch, D.

2010 *Archaeological Survey and Cultural Resource Studies Conducted in 2007 on the Island of Guam in Support of the Joint Guam Build-Up Environmental Impact Statement*. 2 volumes. Prepared for Department of the Navy, Pacific Division, Naval Facilities Engineering Command, Pearl Harbor, Hawaii. International Archaeological Research Institute, Inc., Honolulu, Hawaii.

Yoklavich, A. and D. Tuggle

2004 Andersen Air Force Base Historic Survey Report. International Archaeological Research Institute, Inc. Honolulu, HI.

Results of the above identification efforts indicate that while there are historic properties in the vicinity of the APE, there are no historic properties within the APE.

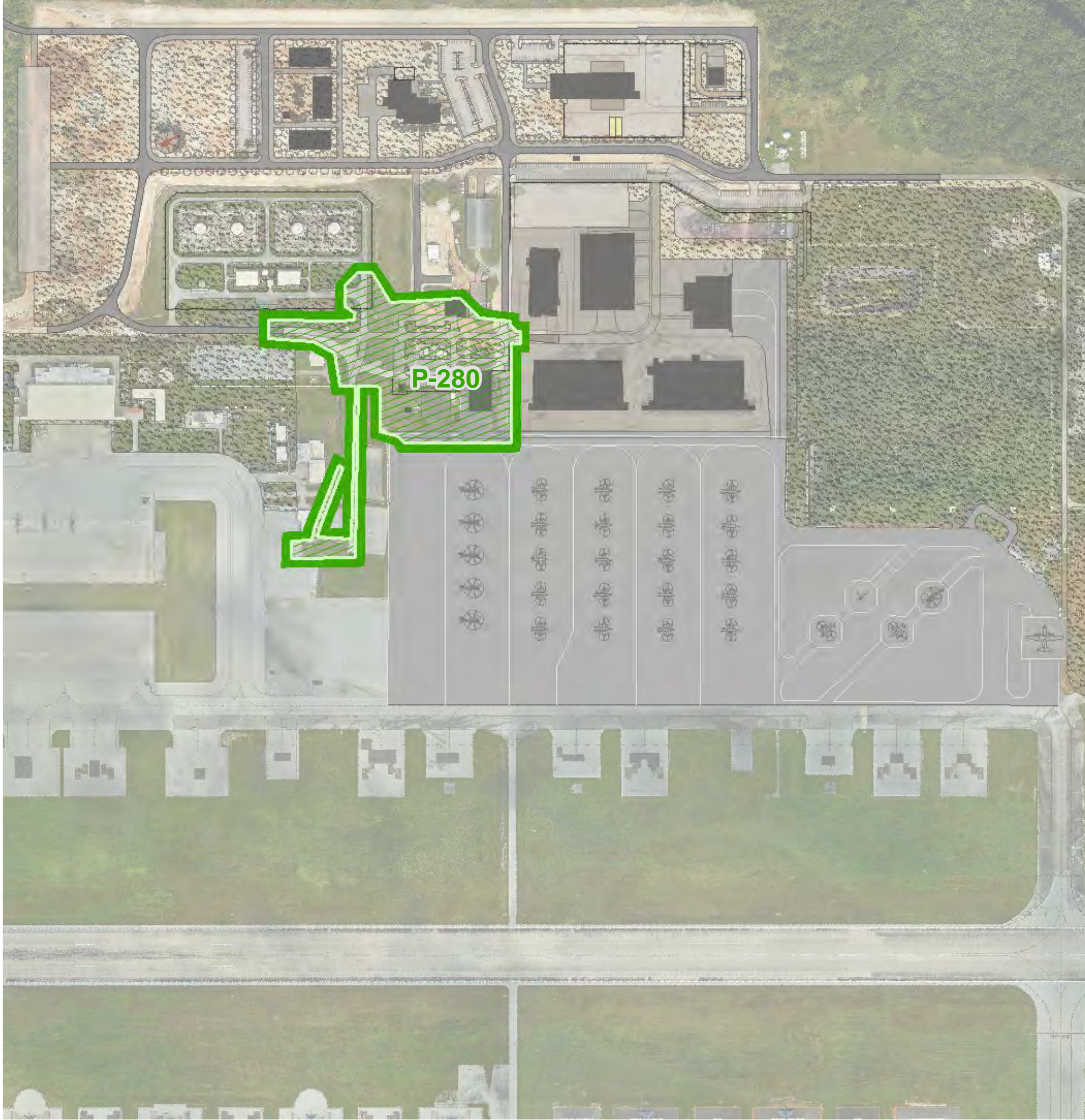
In accordance with Stipulation VI.F. of the PA, the DoD has retained a full-time Archaeologist to provide site checks, oversee coordination and execution of the archaeological mitigation measures in the PA and to provide quality control. This individual is on-staff at Marine Corps Base, Camp Blaz, Public Works Department, and is also designated to respond to and report any inadvertent discoveries to the Signatories, Invited Signatories, and Concurring Parties per Stipulation XII of the PA.

FINDING OF EFFECT:

There are no historic properties within the APE. Therefore, the DoD has determined that no historic properties will be affected by this project. PA Memo #2 will not be required as no mitigation efforts will be necessary.

4 This PA Memo is required by Stipulation IV.E.2.a. of the PA as a means for interested members of the public to provide comments on the identification and evaluation of historic properties. Stipulation IV.E.1.b. of the PA requires the DoD to take into account comments received within 45 days of the date of the delivery of this PA memo to the SHPO and public notification via the CRI website.



FIGURE 1

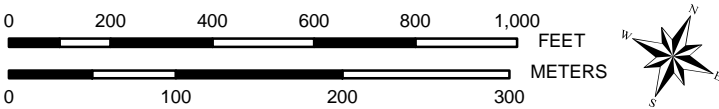


P-280 (Aviation Administration Building) at North Ramp, Andersen AFB - Construction Area

Legend

Total APE Area P-280 = 8 Acres

-  P-280 (Aviation Admin. Bldg.) Project Area
-  Military Installations



PREPARED BY:
Naval Facilities Engineering Command Pacific Division
Guam Program Management Office
DATE: 02 Feb 2021



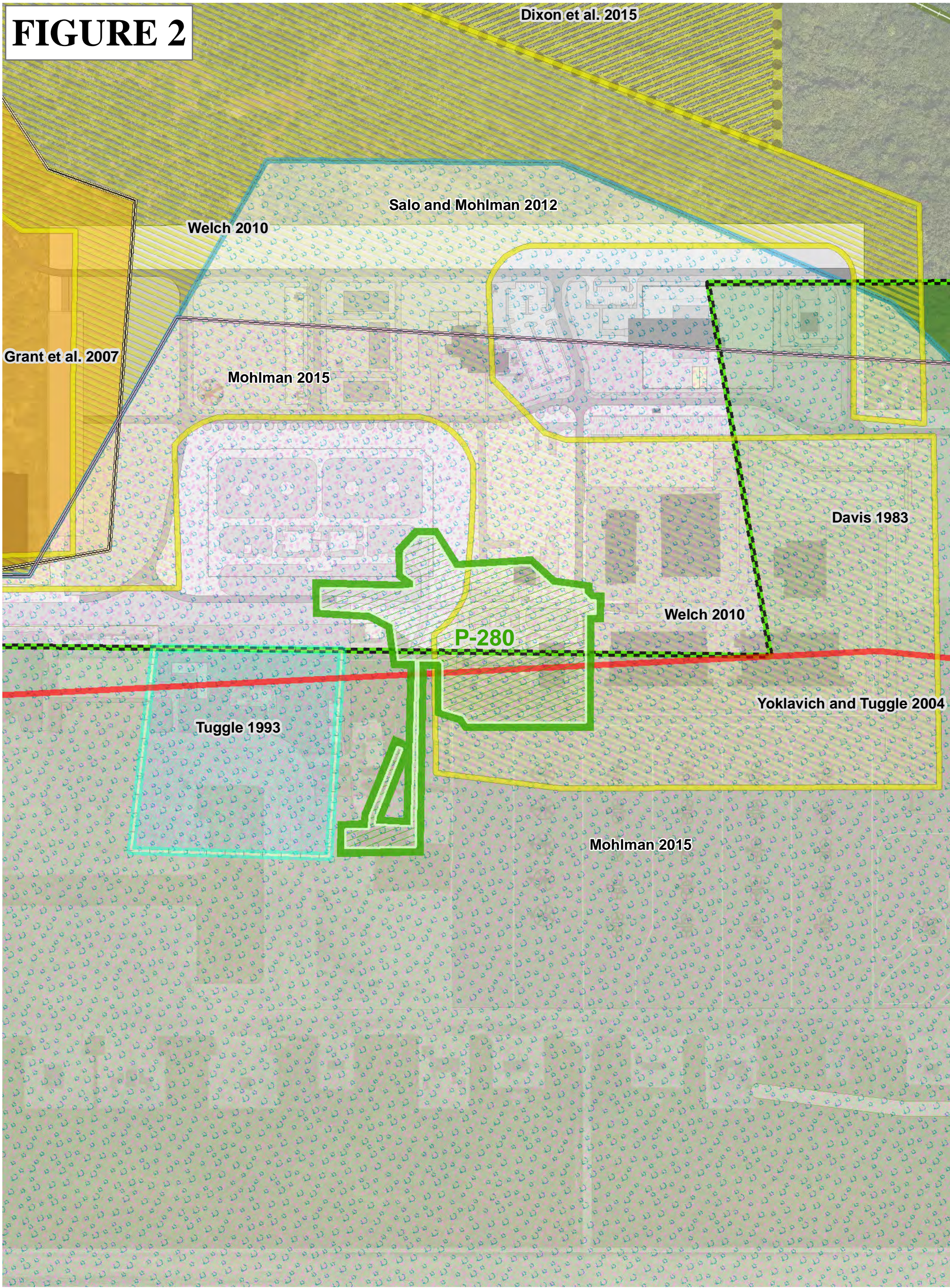
Coordinate System: UTM Zone 55 North
Projection: Transverse Mercator
Datum: D WGS 1984



Date: 2/2/2021 Time: 11:41:01 AM Path: C:\Users\laaron.pulliam\OneDrive\OneDrive\OneDrive - United States Department of the Navy\Documents\GIS Projects\MXD\AAAFB\VPA Memo\P280\PA MEMO_AAABF_NR_P280_Aviation Admin Bldg_Public - Figure 1.mxd

FIGURE 2

Dixon et al. 2015



Date: 3/15/2021 Time: 4:14:39 PM Path: C:\Users\laaron.pulliam\OneDrive\OneDrive\OneDrive - United States Department of the Navy\Documents\GIS Projects\MXDs\AAAFB\WPA Memo\P280\PA MEMO_AA\AFB_NR_P280_Aviation Admin Bldg_Cultural Surveys - Figure 2.mxd

P-280 (Aviation Administration Building) at North Ramp, AAFB - Cultural Survey Area

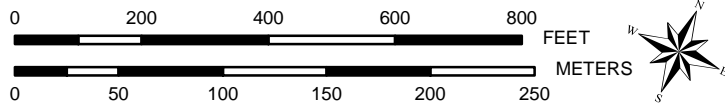
Legend

- P-280 (Aviation Admin. Bldg.) Project Area
- Military Installations

Total APE Area P-280 = 8 Acres

Cultural Surveys

- Davis 1983
- Salo and Mohlman 2012
- Dixon et al. 2015
- Tuggle 1993
- Grant et al. 2007
- Welch 2010
- Mohlman 2015
- Yoklavich and Tuggle 2004



PREPARED BY:
Naval Facilities Engineering Command Pacific Division
Guam Program Management Office
DATE: 15 Mar 2021



Coordinate System: UTM Zone 55 North
Projection: Transverse Mercator
Datum: D WGS 1984



Military Relocation PA Memo Comment Form

2021

If submitting via **e-mail**, scan and send to: criwebcomment@navy.mil

If submitting via **postal mail**, send to:

Attn: CRI Web Comments
Code EV23, NAVFAC Pacific
258 Makalapa Drive, Suite 100
JBPHH, Hawaii 96860-3134

Submitted comments will be posted on the Navy's Cultural Resources Information (CRI) web site. Information presented on the CRI web site is considered public. The sections highlighted in **red** are required to be completed in order for a comment to be posted.

Privacy Act Statement

Personal information will only be used to contact you regarding the comments you submit. This information will only be shared with another government agency if your inquiry relates to that agency, or as otherwise required by law. We will not create individual profiles or give your information to any private organization. While you must provide a valid e-mail address or postal address, please **DO NOT** include personally identifying information such as a social security number.

By submitting this comment form, you agree not to include content that is offensive in nature, such as profanity, personal attacks on individuals, and racist or abusive language.

PROJECT: P-280 Aviation Administration Building, North Ramp Andersen Air Force Base, Guam

SUBJECT: PA Memo #1, Construction of an aviation administration building to provide command and administrative space that will support an assigned 1st Marine Aircraft Wing (1st MAW) aviation combat element, transient deployed aviation units and other Marine Air-Ground Task Force (MAGTF) elements assigned to Guam

Date: _____

Name: _____

CRI User Name (if you don't want your real name to be posted with your comment on the CRI web site):

E-Mail Address: _____

and/or

Postal Mail Address: _____

COMMENTS: _____
